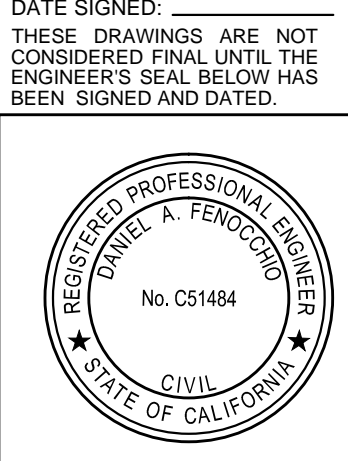


KEY MAP  
NTS

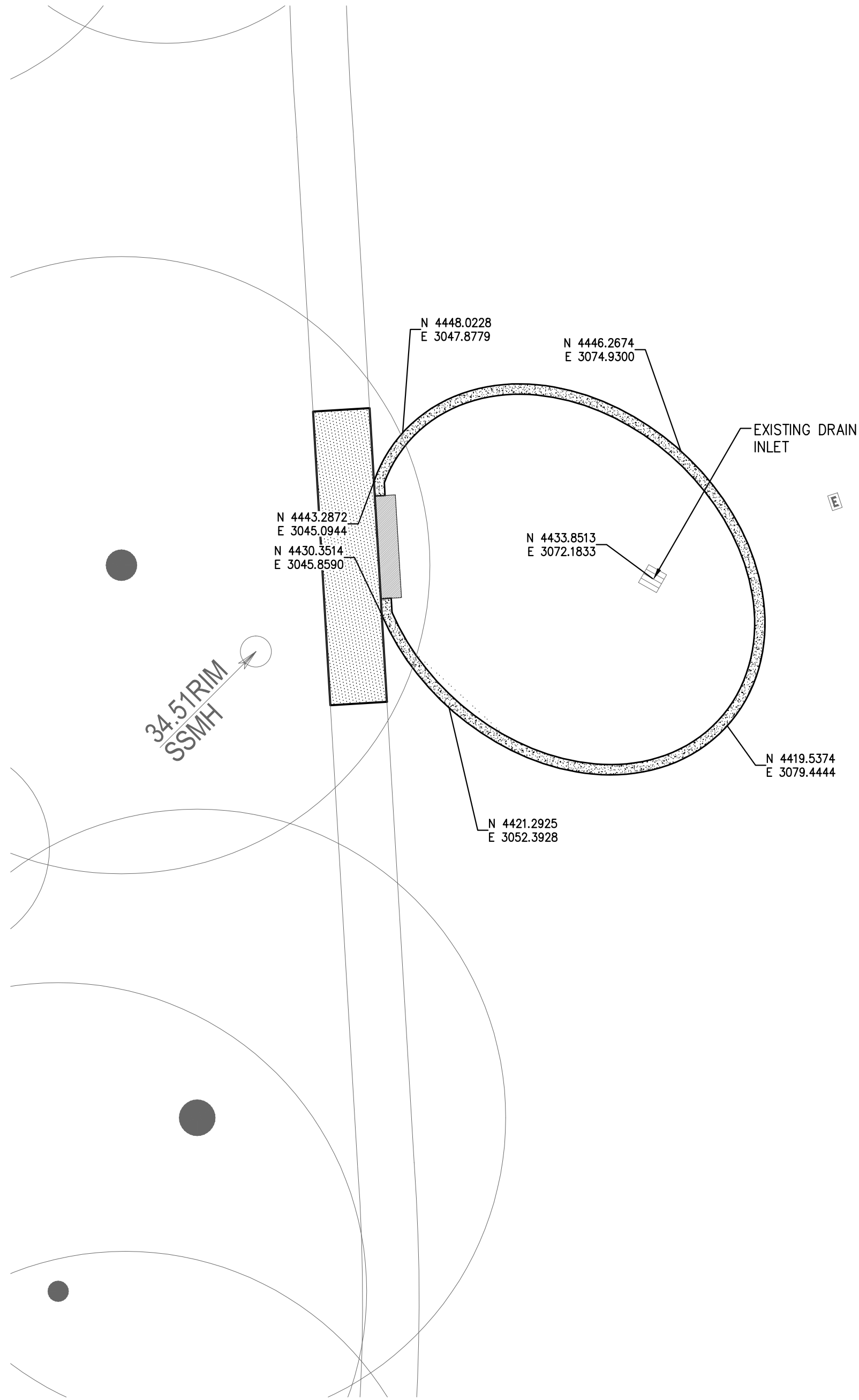


DATE SIGNED: \_\_\_\_\_  
THESE DRAWINGS ARE NOT  
CONSIDERED FINAL UNTIL THE  
ENGINEER'S SEAL BELOW HAS  
BEEN SIGNED AND DATED.

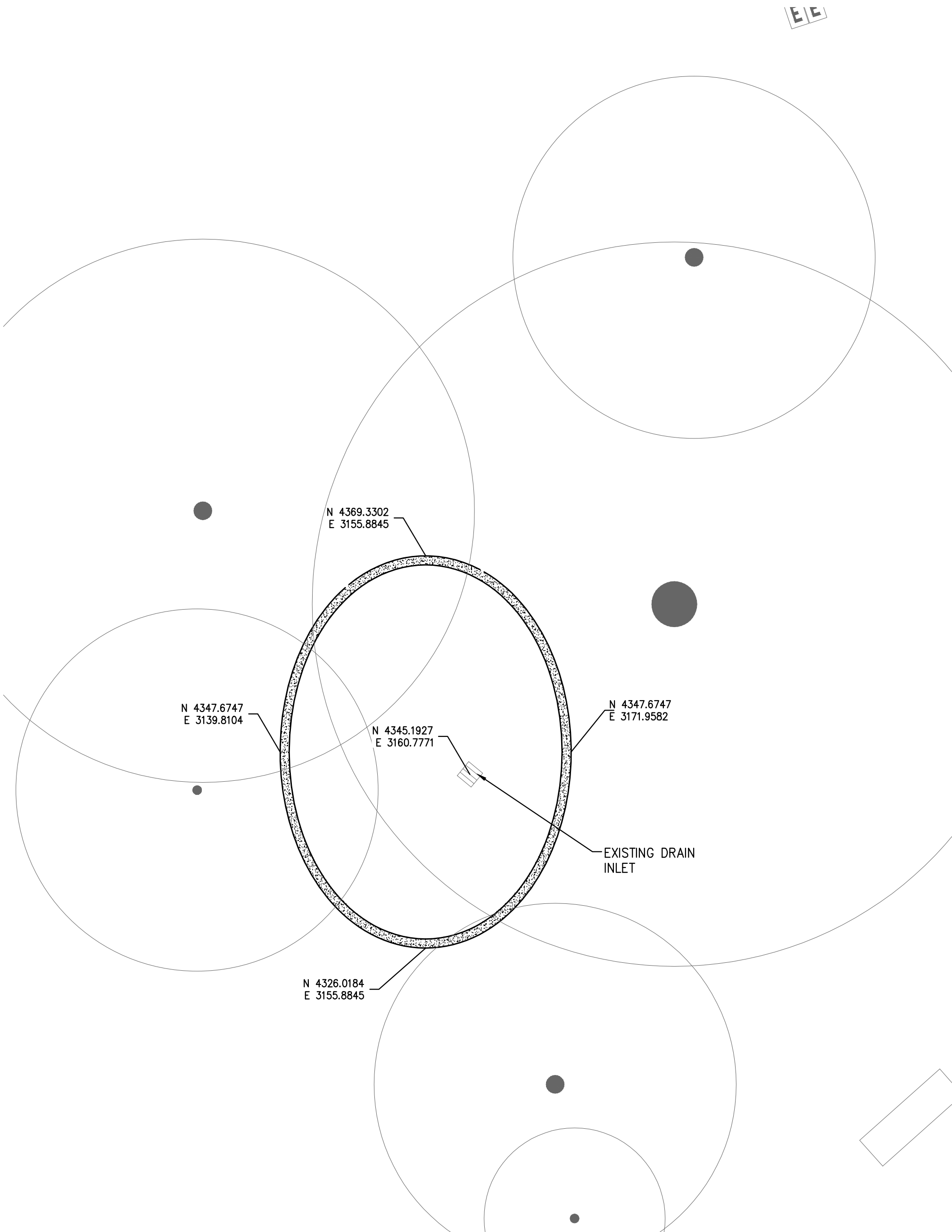
CECWEST.COM		DESIGNED BY	NC
Project Planning • Civil Engineering • Landscape Architecture		DRAWN BY	NC
■ Sacramento Office 2120 20th Street, Suite Three Sacramento, CA 95818 (916) 455-2026		CHECKED BY	DF
■ Davis Office 2840 Spafford Street, Suite 200 Davis, CA 95618 (530) 758-2026		SCALE 1" = 30'	
REGISTERED PROFESSIONAL ENGINEER DANIEL A. FERROCCHIO No. C51484 CIVIL STATE OF CALIFORNIA		SHEET <b>CG-C1</b> OF <b>6</b>	
DATE: 4/24/2015		JOB NO: 1432.01	

CALIFORNIA STATE UNIVERSITY, SACRAMENTO  
CONSTRUCTION DOCUMENTS  
CSUS LID STORMWATER SYSTEM  
CAMPUS GROVE  
SITE PLAN

CALIFORNIA  
S:\Projects\1400\1432 CSUS - LID Storm Water System\AutoCAD\1432-01-Civil\_C03 SHEETS\CG - C1 - SITE.dwg - CG-C1 OVERALL SITE PLAN 4/13/2015 - 9:43AM Plotted by: shores



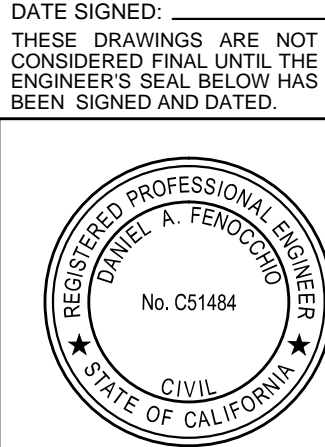
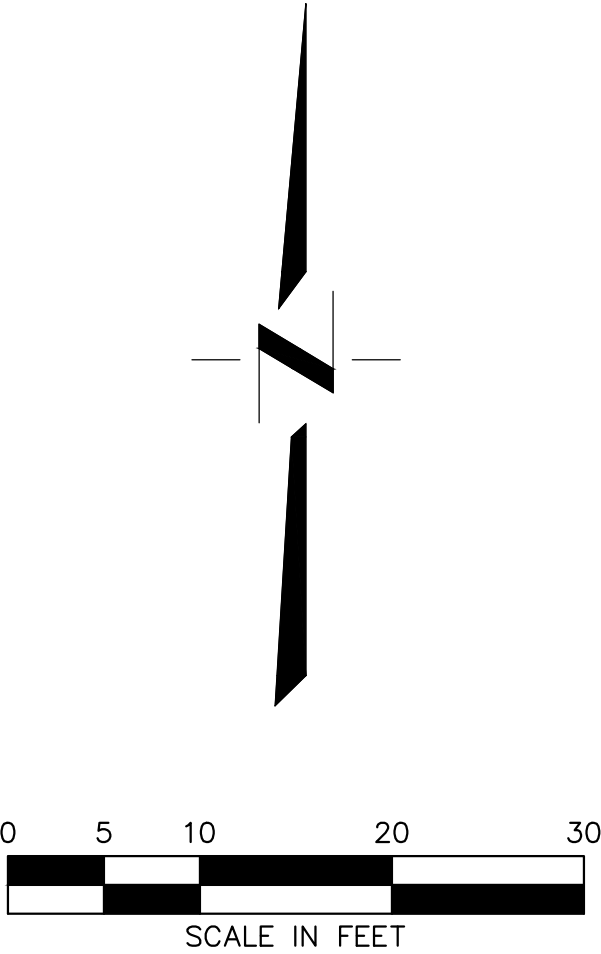
**CG - RG - 1**  
RAIN GARDEN 1"=10'



**CG - RG - 2**  
RAIN GARDEN 1"=10'

**NOTES**

1. REFER TO SHEET CG-C1 SITE PLAN FOR SITE CONTROL.



DATE SIGNED: \_\_\_\_\_  
THESE DRAWINGS ARE NOT  
CONSIDERED FINAL UNTIL THE  
ENGINEER'S SEAL BELOW HAS  
BEEN SIGNED AND DATED.

**CONSTRUCTION DOCUMENTS**  
**CSUS LID STORMWATER SYSTEM**  
**CAMPUS GROVE**  
**HORIZONTAL CONTROL PLAN**

CALIFORNIA STATE UNIVERSITY, SACRAMENTO CALIFORNIA

SHEET  
**CG-C2**

OF  
**6**

DATE: 4/24/2015

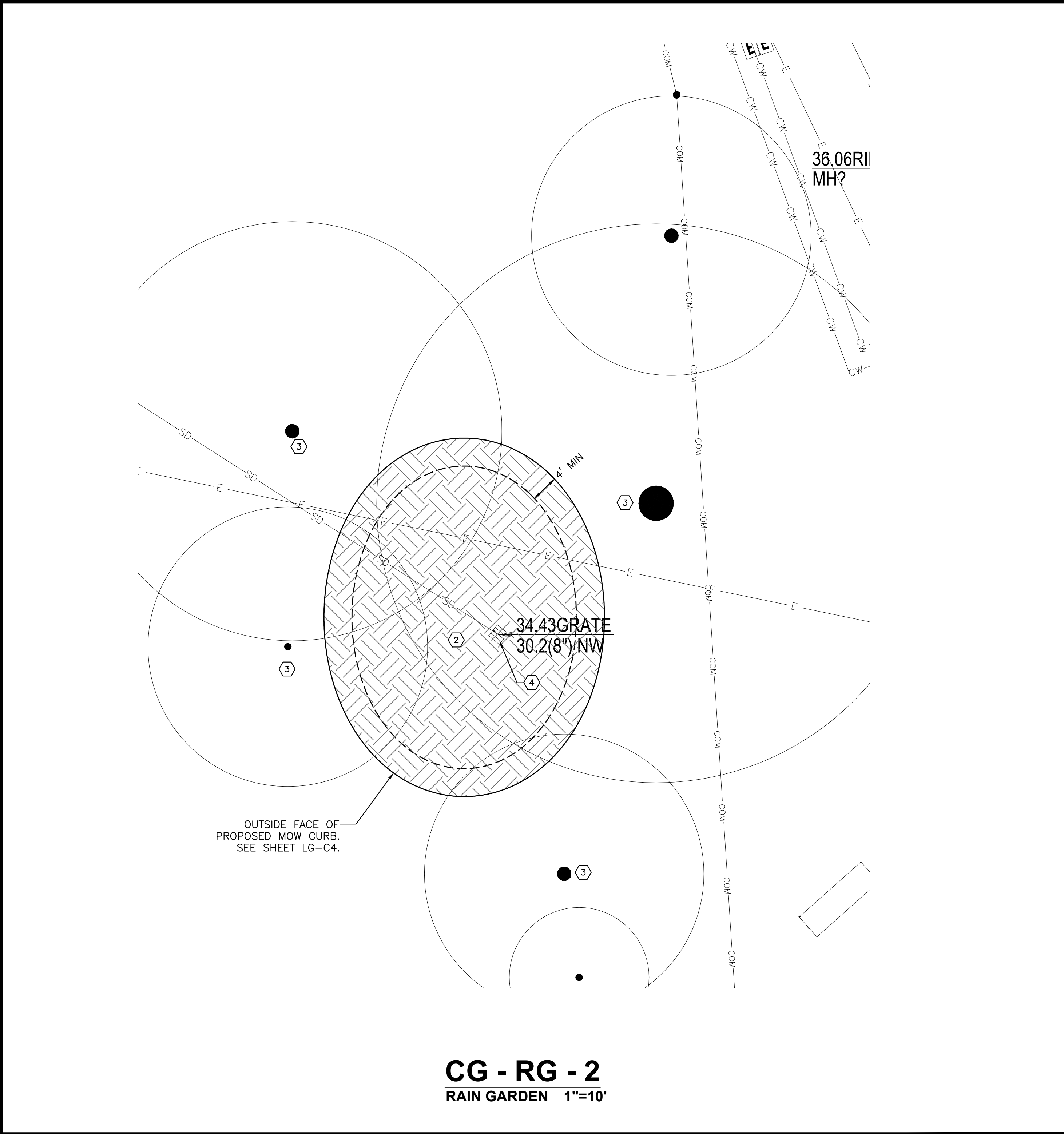
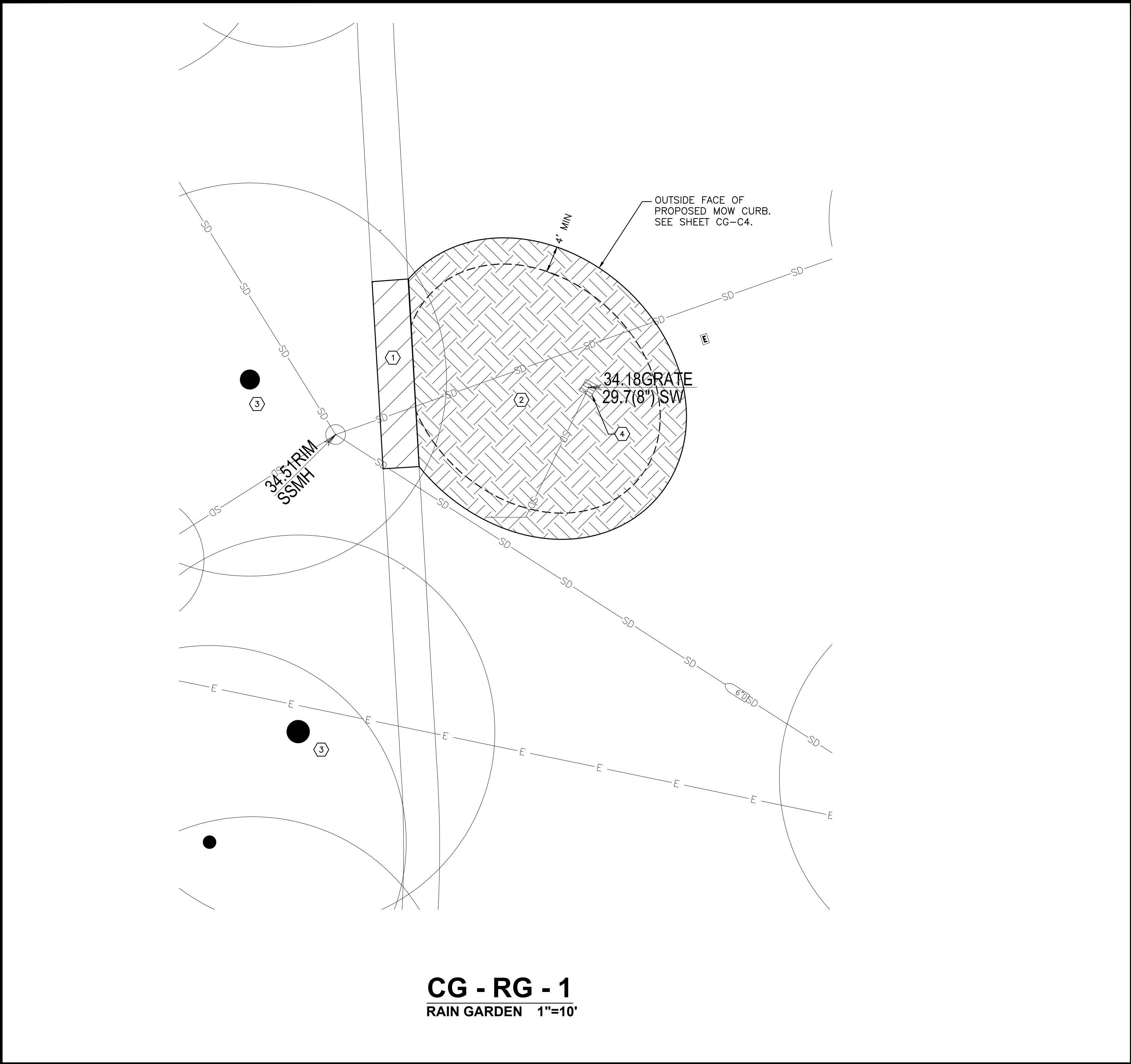
JOB NO: 1432.01

CECWEST.COM  
Project Planning • Civil Engineering • Landscape Architecture  
■ Davis Office  
■ Sacramento Office  
2120 20th Street, Suite 200  
Davis, CA 95618  
(530) 758-2026  
(916) 455-2026



DESIGNED BY: NC  
DRAWN BY: NC  
CHECKED BY: DF  
SCALE:  
1" = 10'

NO.	DATE	REVISIONS	BY	APPD.

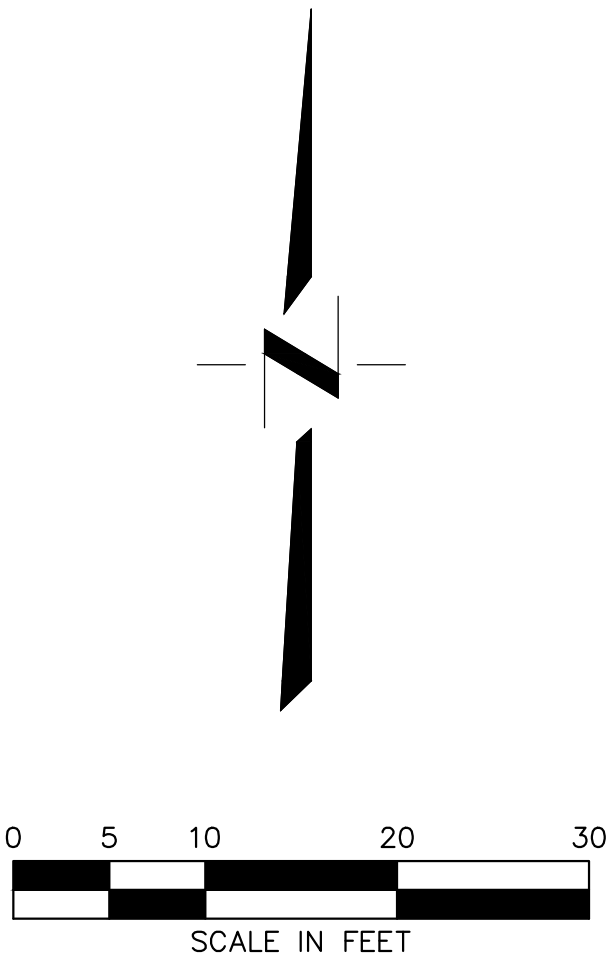


**KEYNOTES:**

- ① REMOVE EXISTING DG PATH TO EXTENTS SHOWN.
- ② REMOVE EXISTING VEGETATION TO EXTENTS SHOWN.
- ③ PROTECT EXISTING TREE. SEE SHEET T-3 FOR TREE PROTECTION NOTES.
- ④ PROTECT EXISTING DRAIN INLET.

**NOTES:**

1. INTENT OF DEMOLITION PLAN IS TO PROVIDE GENERAL SITE DEMOLITION REQUIREMENTS TO CONTRACTOR. PLAN IS NOT INTENDED TO PROVIDE DETAILED INFORMATION ON SITE REMOVAL, PROTECTION AND PHASING. CONTRACTOR SHALL BE RESPONSIBLE FOR PERFORMING SITE VISITS TO DEVELOP A DETAILED DEMOLITION PLAN IN ACCORDANCE WITH THE PROPOSED SITE IMPROVEMENTS.
2. SITE DEMOLITION INCLUDES:  
- REMOVE EXISTING LANDSCAPE AREA.  
- REMOVE/ADJUST EXISTING ABOVE GROUND AND UNDERGROUND IRRIGATION FACILITIES. COORDINATE EXTENT OF IMPROVEMENTS WITH LANDSCAPE PLANS
3. CONTRACTOR SHALL DISPOSE OF ALL MATERIALS PROPERLY OFFSITE.
4. LIMITS OF REMOVAL SHOWN ON THESE PLANS ARE APPROXIMATE. CONTRACTOR SHALL MODIFY LIMITS OF DEMOLITION AS NECESSARY TO PROVIDE FOR NEW CONSTRUCTION, BASED ON CONTRACTOR'S METHOD OF CONSTRUCTION.
5. CONTRACTOR SHALL PROVIDE TRAFFIC CONTROL FLAGGING FOR VEHICULAR INGRESS/EGRESS.
6. PROJECT VEHICULAR AND PEDESTRIAN ACCESS PLAN SHALL BE PREPARED BY CONTRACTOR.
7. THE TYPES, LOCATIONS, SIZES AND/OR DEPTHS OF EXISTING UTILITIES SHOWN ON THESE PLANS WERE OBTAINED FROM SOURCES OF VARYING RELIABILITY. THE CONTRACTOR IS CAUTIONED THAT ONLY ACTUAL EXCAVATION WILL REVEAL THE TYPES, EXTENT, SIZE, LOCATION AND DEPTH OF SUCH UNDERGROUND FACILITIES. HOWEVER, THE ENGINEER CAN ASSUME NO RESPONSIBILITY FOR THE COMPLETENESS OR ACCURACY OF ITS DELINEATION OF SUCH UNDERGROUND FACILITIES NOR FOR THE EXISTENCE OF OTHER BURIED OBJECTS WHICH ARE NOT SHOWN ON THESE PLANS. IF NO ELEVATION IS SHOWN ON THE PLANS THE CONTRACTOR SHALL ASSUME THE ELEVATION IS UNKNOWN.



DATE SIGNED: \_\_\_\_\_  
THESE DRAWINGS ARE NOT  
CONSIDERED FINAL UNTIL THE  
ENGINEER'S SEAL BELOW HAS  
BEEN SIGNED AND DATED.



**CONSTRUCTION DOCUMENTS  
CSUS LID STORMWATER SYSTEM  
CAMPUS GROVE  
DEMOLITION PLAN**

SHEET  
**CG-C3**

OF  
**6**

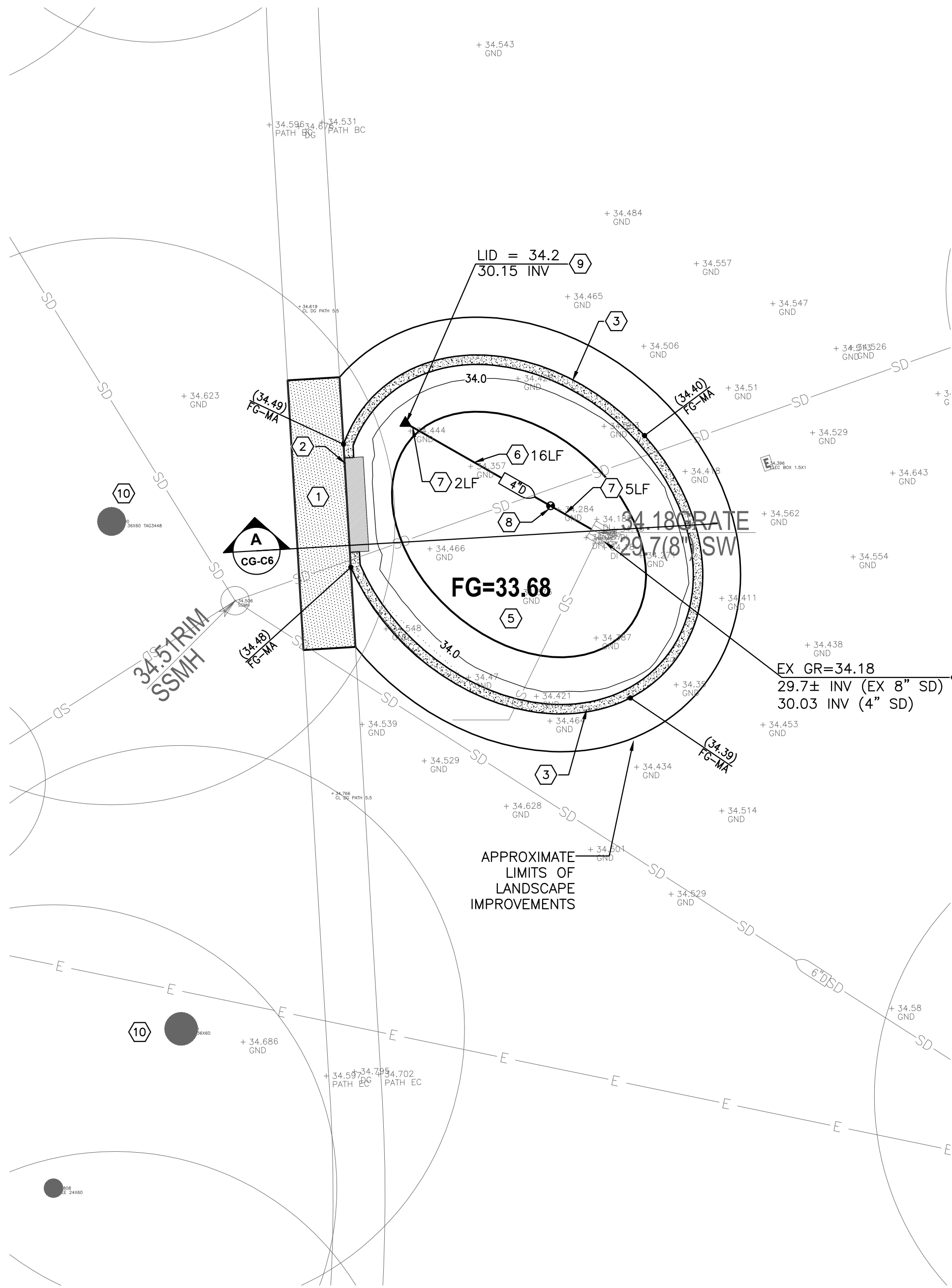
DATE: 4/24/2015

JOB NO: 1432.01

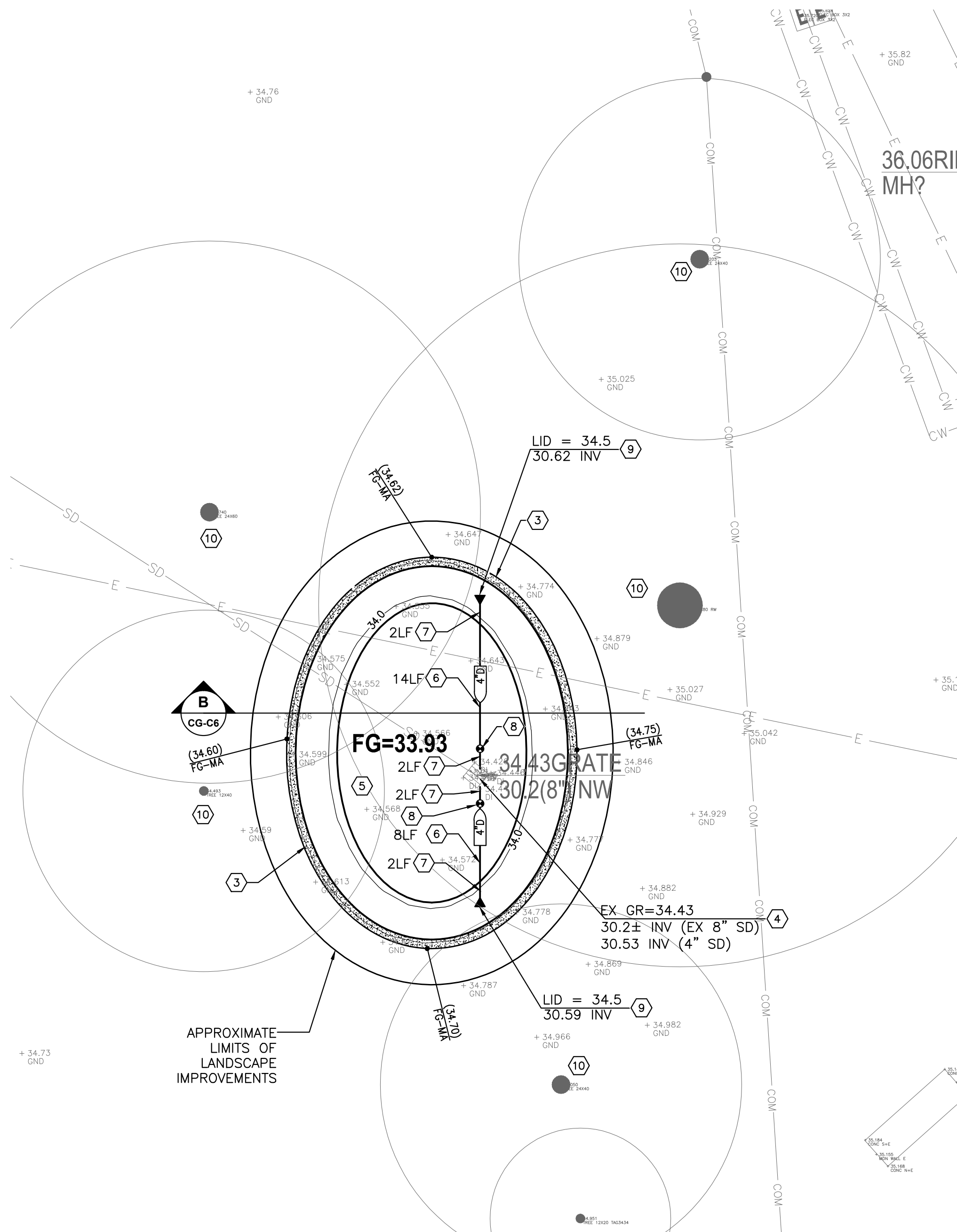
CECWEST.COM  
Project Planning • Civil Engineering • Landscape Architecture  
■ Davis Office  
2120 20th Street, Suite 200  
Davis, CA 95618  
(530) 758-2026  
■ Sacramento Office  
2840 Spafford Street, Suite 200  
Sacramento, CA 95818  
(916) 455-2026



CALIFORNIA STATE UNIVERSITY, SACRAMENTO



CG - RG - 1  
RAIN GARDEN 1"=10'



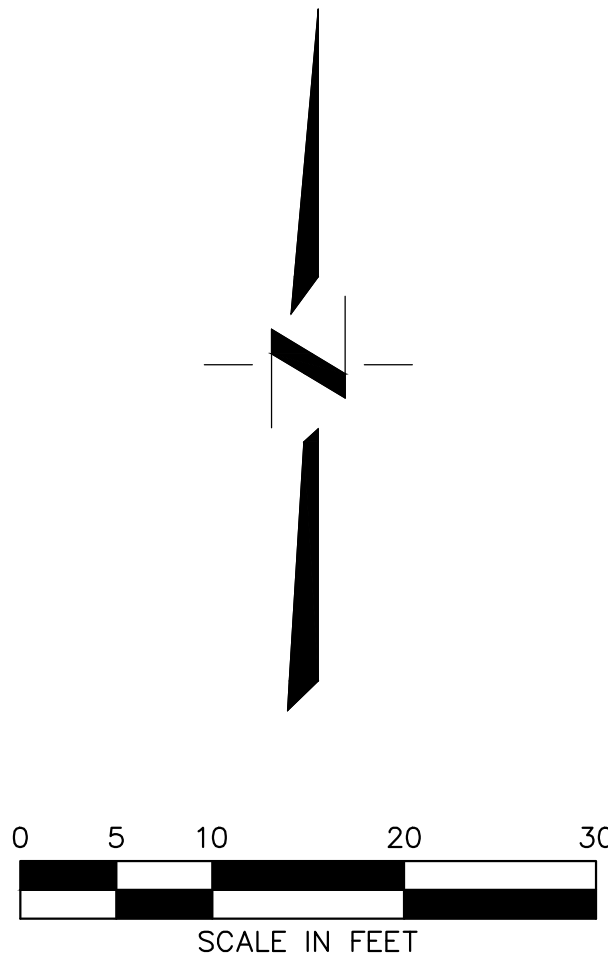
CG - RG - 2  
RAIN GARDEN 1"=10'

KEYNOTES:

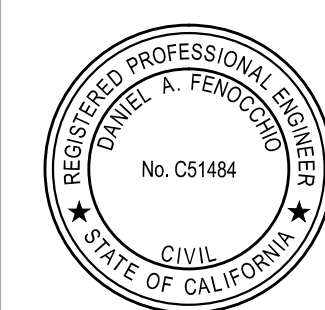
- REPLACE EXISTING DECOMPOSED GRANITE PATH IN KIND.
- CONCRETE WALL. SEE LANDSCAPE PLANS.
- 12" CONCRETE MOW BAND. SEE LANDSCAPE PLANS.
- EXISTING DRAIN INLET TO REMAIN.
- INSTALL NEW RAIN GARDEN AREA PER SECTIONS.
- INSTALL 4" PERFORATED HDPE STORM DRAIN PIPE SURROUNDED IN 6" (MINIMUM) GRAVEL @ S=0.005. LENGTH PER PLAN. PLACE GEOTEXTILE FABRIC AROUND GRAVEL LAYER.
- INSTALL 4" HDPE STORM DRAIN PIPE @ S=0.005. LENGTH PER PLAN.
- INSTALL DRAIN VALVE PER DETAIL 1 ON SHEET CG-C6.
- INSTALL STORM DRAIN CLEANOUT PER DETAIL 2 ON SHEET CG-C6.
- EXISTING TREE TO REMAIN. SEE TREE PROTECTION NOTES ON SHEET T-3.

NOTES:

- CONTRACTOR SHALL ADJUST ALL EXISTING UTILITY STRUCTURES (SHOWN AND NOT SHOWN) TO FINAL GRADE. CONTRACTOR SHALL PERFORM SITE WALK PRIOR TO CONSTRUCTION TO VERIFY ALL EXISTING UTILITY STRUCTURE LOCATIONS. COST OF UTILITY STRUCTURE ADJUSTMENT SHALL BE INCLUDED IN BASE BID.
- THE TYPES, LOCATIONS, SIZES AND/OR DEPTHS OF EXISTING UTILITIES SHOWN ON THESE PLANS WERE OBTAINED FROM SOURCES OF VARYING RELIABILITY. THE CONTRACTOR IS CAUTIONED THAT ONLY ACTUAL EXCAVATION WILL REVEAL THE TYPES, EXTENT, SIZE, LOCATION AND DEPTH OF SUCH UNDERGROUND FACILITIES. HOWEVER, THE ENGINEER CAN ASSUME NO RESPONSIBILITY FOR THE COMPLETENESS OR ACCURACY OF ITS DELINEATION OF SUCH UNDERGROUND FACILITIES, NOR FOR THE EXISTENCE OF OTHER BURIED OBJECTS WHICH ARE NOT SHOWN ON THESE PLANS. IF NO ELEVATION IS SHOWN ON THE PLANS THE CONTRACTOR SHALL ASSUME THE ELEVATION IS UNKNOWN.
- CONTRACTOR SHALL REPLACE ALL LANDSCAPE AREAS DISTURBED DURING CONSTRUCTION.



DATE SIGNED: \_\_\_\_\_  
THESE DRAWINGS ARE NOT  
CONSIDERED FINAL UNTIL THE  
ENGINEER'S SEAL BELOW HAS  
BEEN SIGNED AND DATED.



CONSTRUCTION DOCUMENTS  
CSUS LID STORMWATER SYSTEM  
CAMPUS GROVE  
IMPROVEMENT PLAN

SHEET  
**CG-C4**  
OF  
**6**  
DATE: 4/24/2015  
JOB NO: 1432.01

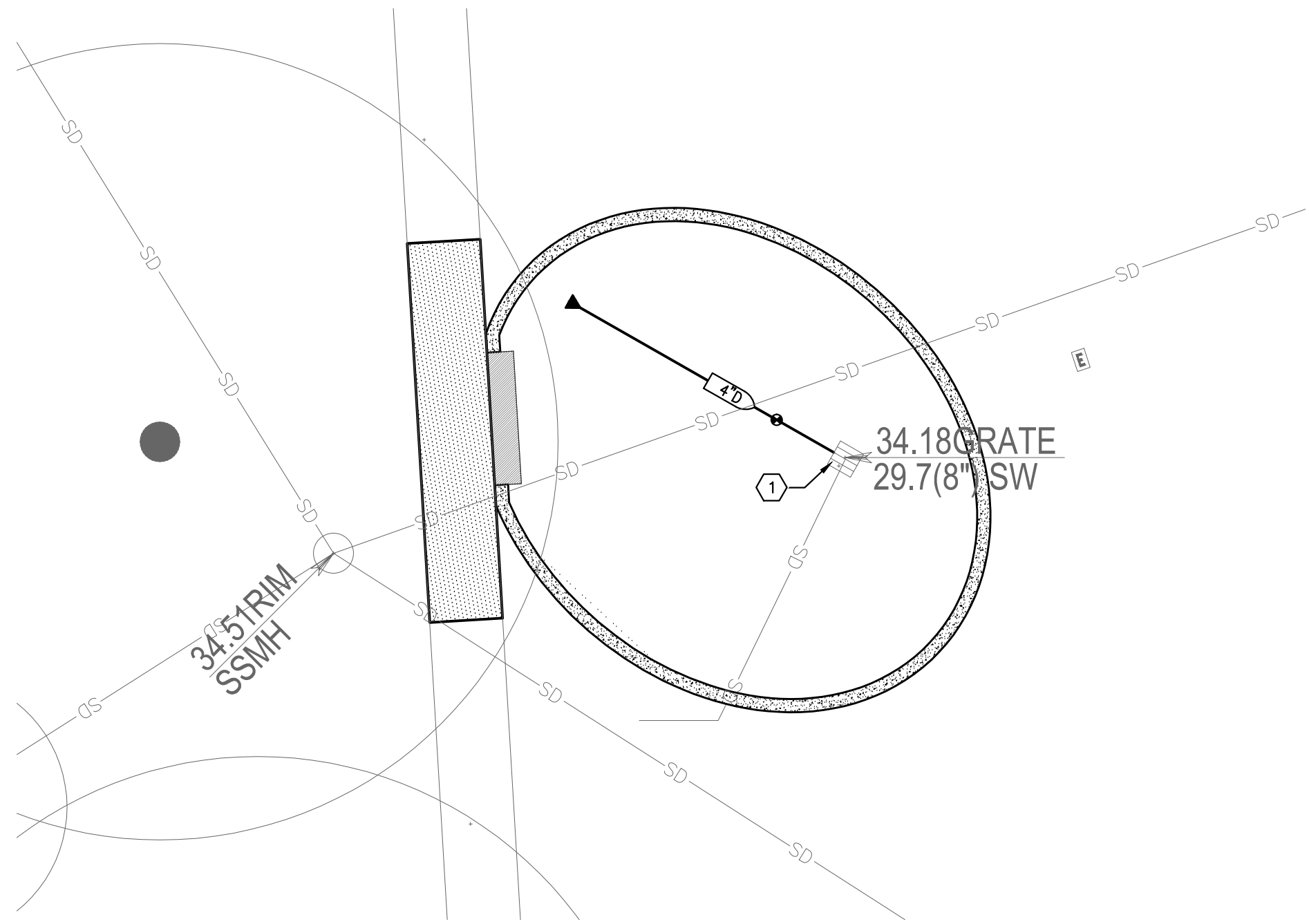
CECWEST.COM  
Project Planning • Civil Engineering • Landscape Architecture  
Davis Office  
2840 Spafford Street, Suite 200  
Davis, CA 95618  
(530) 758-2026  
Sacramento Office  
2120 20th Street, Suite Three  
Sacramento, CA 95818  
(916) 455-2026



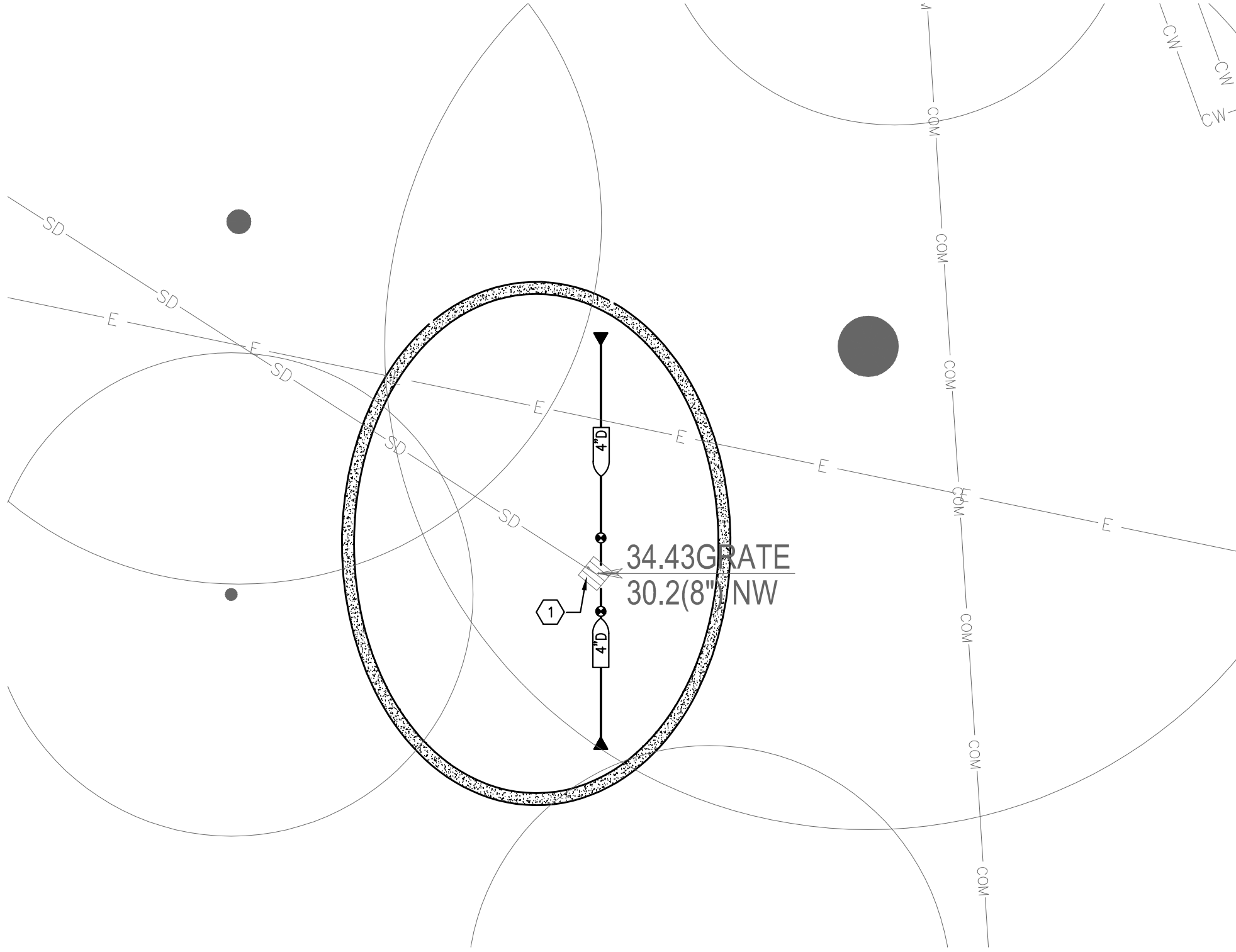
CALIFORNIA STATE UNIVERSITY, SACRAMENTO  
S:\Projects\1400\1432 CSUS - LID Storm Water System\AutoCAD\1432-01-Civil\03a Sheets\CG - C4 - IMPROV.dwg - CG - 4/13/2015 - 9:42AM Plotted by: charles

NO.	DATE	REVISIONS	BY	APPRO.	DESIGNED BY	DRAWN BY	CHECKED BY	SCALE
					NC	NC	DF	1" = 10'





**CG - RG - 1**  
RAIN GARDEN 1"=10'



**CG - RG - 2**  
RAIN GARDEN 1"=10'

**KEYNOTES**

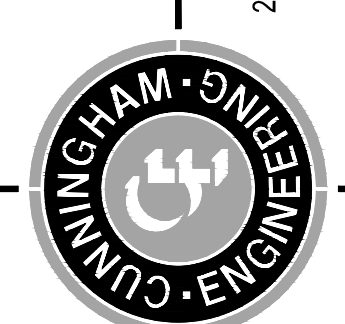
- ① INSTALL STORM DRAIN INLET SEDIMENT CONTROL AND FILTER BAG PER CITY OF SACRAMENTO STANDARD DWG. NOS. Q-20 & Q-30.

**NOTES**

1. REFER TO SHEET T-3 FOR EROSION CONTROL NOTES.
2. CONTRACTOR SHALL PROVIDE CONCRETE WASHOUT AREA PER CITY OF SACRAMENTO STANDARD DWG. NO. Q-80. CONTRACTOR SHALL COORDINATE LOCATION WITH CSUS REPRESENTATIVE PRIOR TO CONSTRUCTION.
3. CONTRACTOR SHALL COORDINATE WITH CSUS REPRESENTATIVE FOR MATERIAL STORAGE LOCATION PRIOR TO CONSTRUCTION.



DESIGNED BY	NC
DRAWN BY	NC
CHECKED BY	DF
SCALE	1" = 10'



CEWEST.COM

Project Planning • Civil Engineering • Landscape Architecture

■ Davis Office  
2840 Spafford Street, Suite 200  
Davis, CA 95618  
(530) 758-2026

■ Sacramento Office  
2120 20th Street, Suite Three  
Sacramento, CA 95818  
(916) 455-2026

CUMMINGHAM ENGINEERING

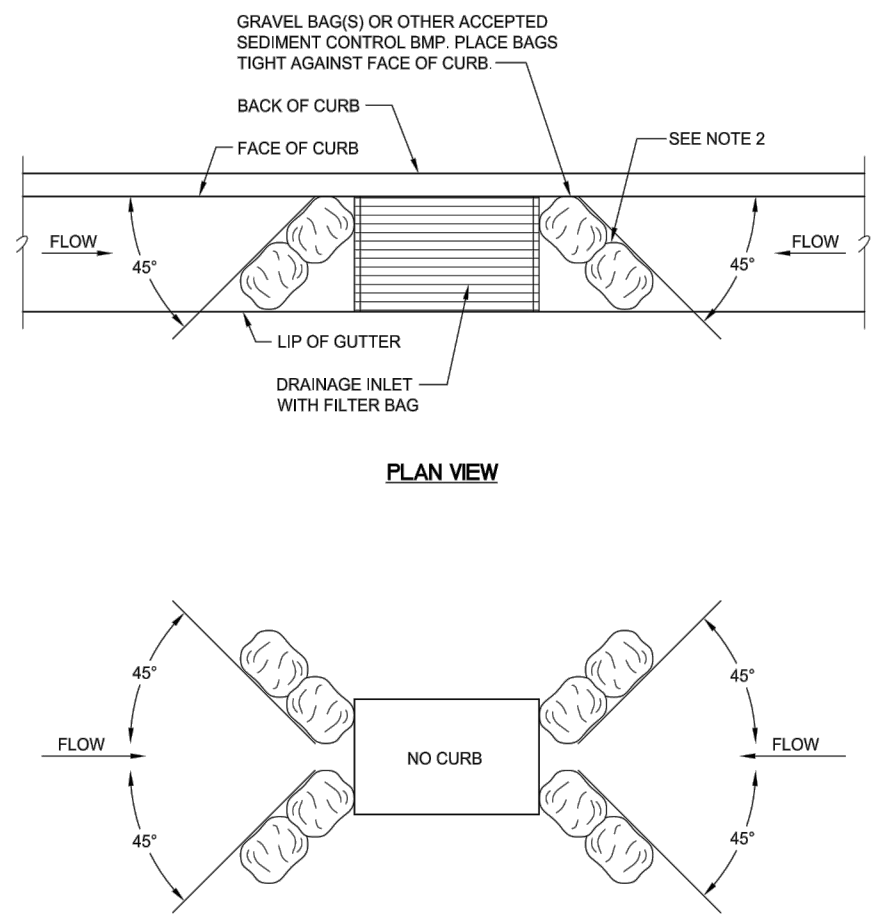
CONSTRUCTION DOCUMENTS  
CSUS LID STORMWATER SYSTEM  
CAMPUS GROVE  
EROSION CONTROL PLAN

CALIFORNIA STATE UNIVERSITY, SACRAMENTO

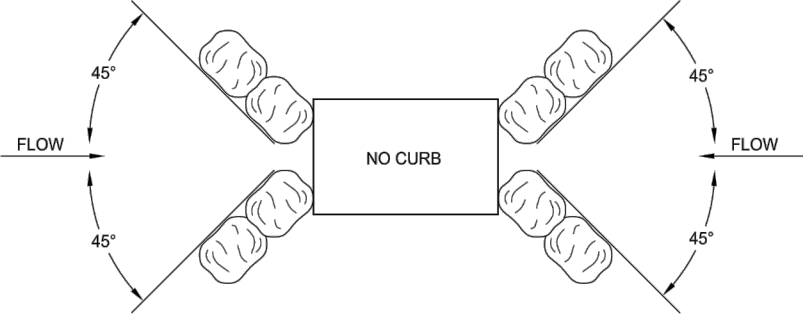
SHEET  
**CG-C5**  
OF  
**6**

DATE: 4/24/2015

JOB NO: 1432.01



**PLAN VIEW**



**NOTES**

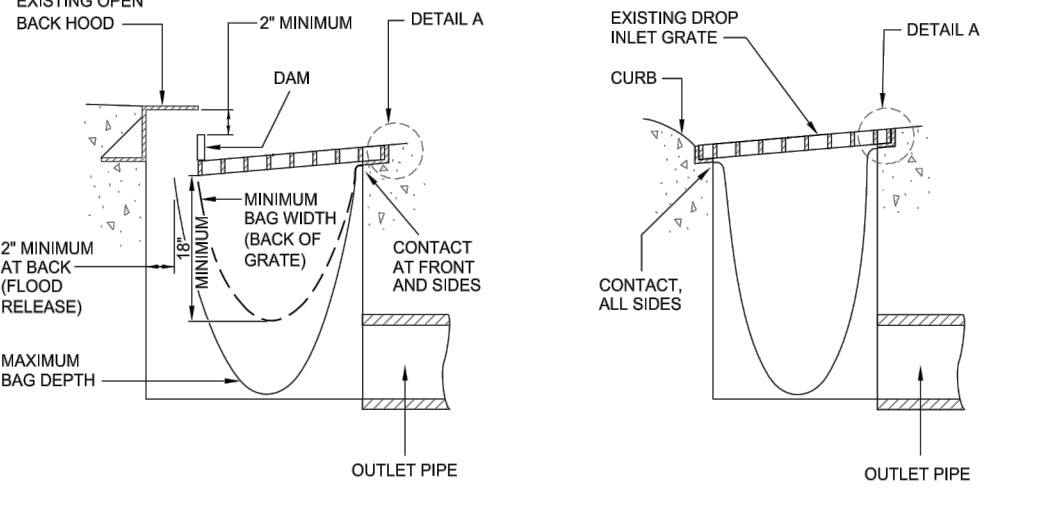
1. SEDIMENT TRAPPED UPSTREAM OF SEDIMENT CONTROL BMP SHALL BE REMOVED WEEKLY AND PRIOR TO A RAINFALL EVENT.
2. PLACE BMPs TIGHTLY TOGETHER AT JOINTS TO PREVENT OR MINIMIZE SEEPAGE AT JOINTS.
3. INLET SEDIMENT CONTROL MUST BE INSPECTED WEEKLY AND AFTER EACH STORM, AND REPAIRED OR REPLACED AS NEEDED.
4. INLET SEDIMENT CONTROL IS REQUIRED FOR ALL D's IN ADDITION TO A STORM DRAIN INLET FILTER BAG.

REV.	DATE	DESCRIPTION
1		
2		
3		
4		

CITY OF SACRAMENTO  
DEPARTMENT OF UTILITIES

INLET SEDIMENT  
CONTROL

APPROD BY: [Signature]  
DATE: MAY 2007  
NO SCALE  
DWG. NO. Q-20



**DETAIL A**

**NOTES**

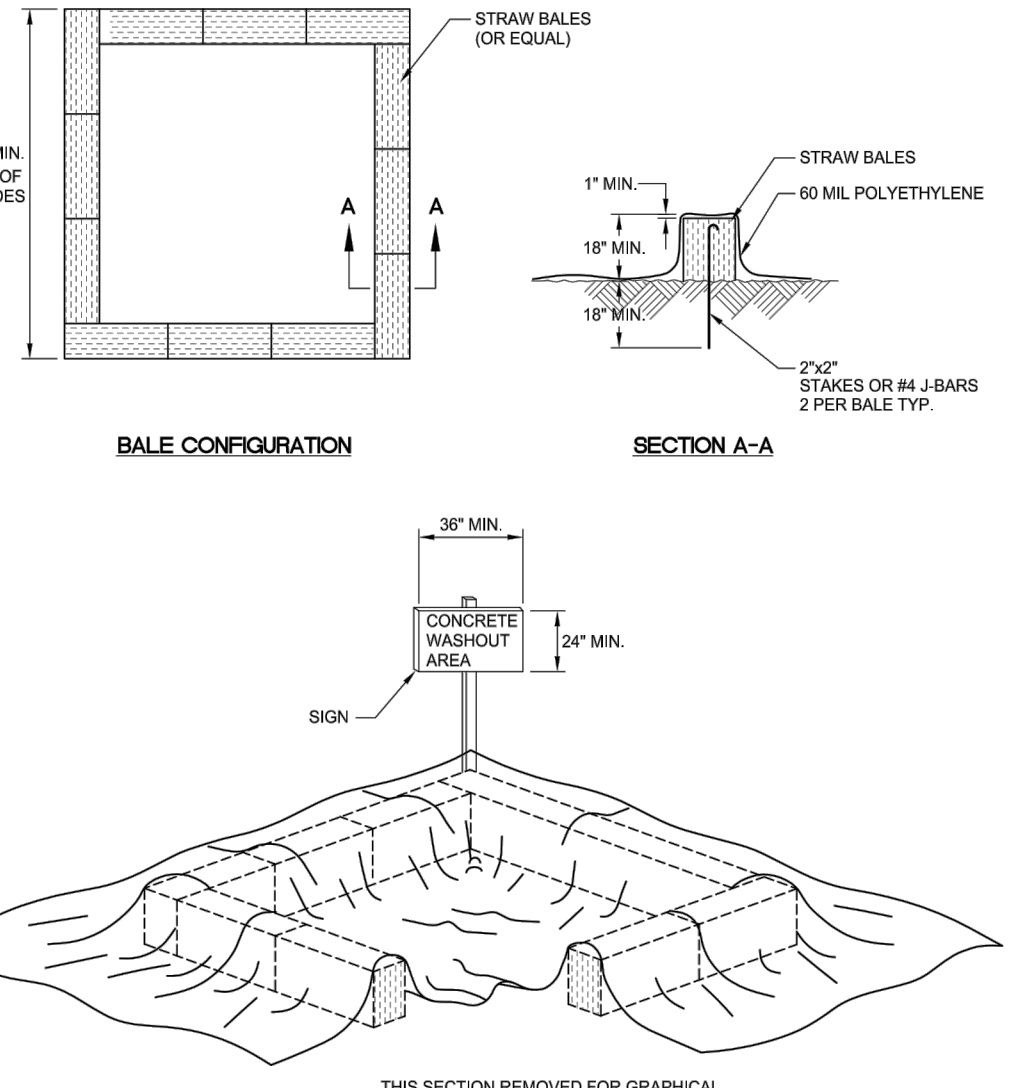
1. THE MAXIMUM DRAINAGE AREA PER FILTER BAG SHALL BE NO MORE THAN 2 ACRES.
2. THE FILTER BAG SHALL BE MANUFACTURED FROM UNREINFORCED POLYPROPYLENE, NYLON, POLYESTER, OR ETHYLENE FABRIC WITH A MINIMUM TENSILE STRENGTH OF 50 LBS PER LINEAL FOOT. AN EQUIVALENT OPENING SIZE NOT GREATER THAN 20 SIEVE AND WITH A MINIMUM FLOW RATE OF 40 GALLONS/MINUTE/50 FT.
3. THE FILTER BAG MAY BE SUSPENDED FROM OR HELD IN PLACE BY THE EXISTING INLET GRATE OR OTHER APPROVED METHOD, PROVIDING NO MODIFICATION OR DAMAGE SHALL BE DONE TO THE INLET GRATE OR FRAME. THE INLET GRATE SHALL NOT BE CAUSED TO REST MORE THAN 12" ABOVE THE INLET FRAME (SEE DETAIL A).
4. THE FILTER BAG MAY EXTEND TO THE BOTTOM OF THE INLET BOX PROVIDED THE OUTLET PIPE IS UNOBSTRUCTED.
5. FLOWS SHALL NOT BE ALLOWED TO BYPASS THE BAG. THE BAG OR ITS FRAME SHALL CATCH FLOWS AT ALL SIDES OF THE INLET, EXCEPT AS SHOWN FOR FLOOD RELEASE.
6. INLET FILTER BAGS SHALL BE INSPECTED WEEKLY AND AFTER EACH RAINFALL DURING THE WET SEASON AND MONTHLY DURING THE DRY SEASON. SEDIMENT AND DEBRIS SHALL BE REMOVED BEFORE ACCUMULATIONS HAVE REACHED ONE THIRD THE DEPTH OF THE BAG. BAGS SHALL BE REPAIRED OR REPLACED AS SOON AS DAMAGE OCCURS.
7. THIS DETAIL IS SCHEMATIC AND MUST BE ADJUSTED FOR DIFFERENT DI TYPES.

REV.	DATE	DESCRIPTION
1		
2		
3		
4		

CITY OF SACRAMENTO  
DEPARTMENT OF UTILITIES

STORM DRAIN INLET  
FILTER BAG

APPROD BY: [Signature]  
DATE: MAY 2007  
NO SCALE  
DWG. NO. Q-30



**BALE CONFIGURATION**

**SECTION A-A**

**NOTES**

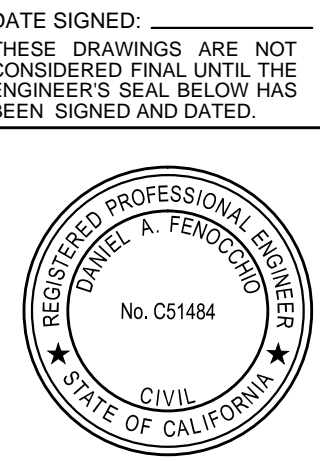
1. FACE SIGN TOWARD NEAREST STREET OR ACCESS POINT.
2. CONCRETE WASHOUT SHALL BE LOCATED BEHIND CURB AND 50 FT. MINIMUM FROM DRAINAGE INLETS OR WATERCOURSES.

REV.	DATE	DESCRIPTION
1		
2		
3		
4		

CITY OF SACRAMENTO  
DEPARTMENT OF UTILITIES

CONCRETE WASHOUT

APPROD BY: [Signature]  
DATE: MAY 2007  
NO SCALE  
DWG. NO. Q-80



DATE SIGNED: [Signature]  
THESE DRAWINGS ARE NOT  
CONSIDERED FINAL UNTIL THE  
ENGINEER'S SEAL BELOW HAS  
BEEN SIGNED AND DATED.

